

### Nippon Mining Holdings / Corporate Profile

(As of April 1, 2008)



Corporate Name	Nippon Mining Holdings, Inc.
Representative	Mitsunori Takahagi
Number of Employees	10,316 (consolidated, as of March 31, 2008)
Head Office	2-10-1, Toranomon, Minato-ku, Tokyo, Japan 105-0001
Founded	September 27, 2002
Capital	¥73.9 billion
Date for the Settlement of Accounts	March 31

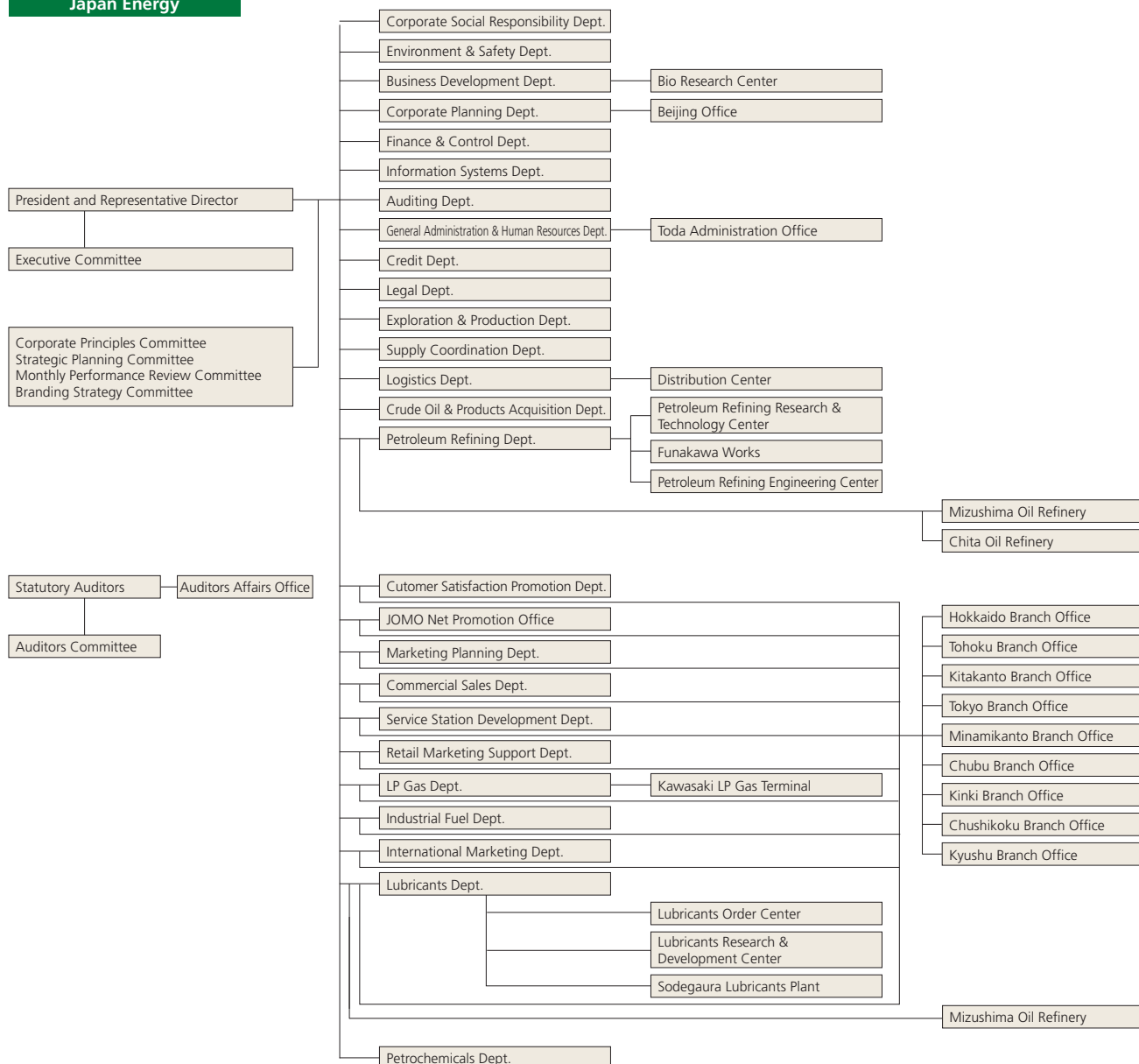
### Japan Energy /Corporate Profile

(As of April 1, 2008)

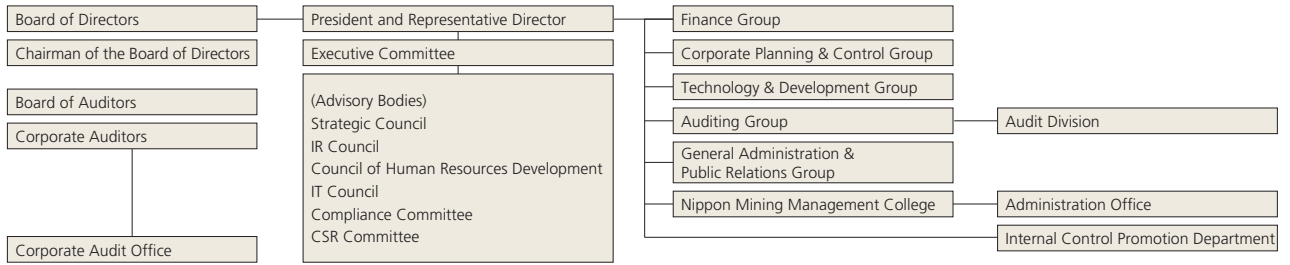


Corporate Name	Japan Energy Corporation
Representative	Isao Matsushita, President and Representative Director
Number of Employees	4,196 (Japan Energy Group, as of March 31, 2008)
Capital	¥48.0 billion (100% subsidiary of Nippon Mining Holdings)
Head Office	2-10-1, Toranomon, Minato-ku, Tokyo, Japan 105-8407
Principal Business	Petroleum exploration and development, petroleum refining and marketing, petrochemicals

### Organization of Japan Energy



### Organization of Nippon Mining Holdings



### Nippon Mining & Metals / Corporate Profile

(As of April 1, 2008)



Corporate Name	Nippon Mining & Metals Co., Ltd.
Representative	Masanori Okada, President and Representative Director
Number of Employees	4,851 (Nippon Mining & Metals Group, as of March 31, 2008)
Capital	¥24.5 billion (100% subsidiary of Nippon Mining Holdings)
Head Office	2-10-1, Toranomon, Minato-ku, Tokyo, Japan 105-0001
Principal Business	Resources development, copper smelting and refining, electronic materials, metal manufacturing, recycling and environmental services

### Organization of Nippon Mining & Metals

