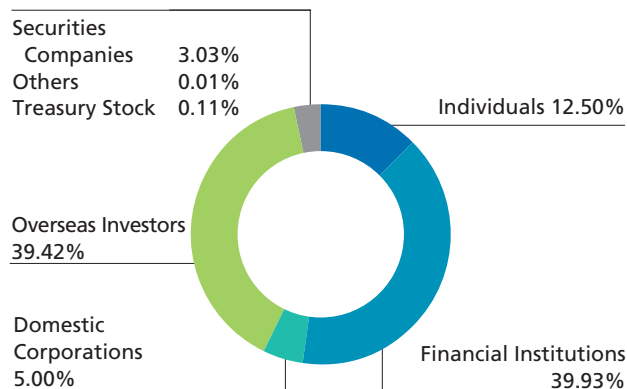


(As of March 31, 2008)

## Share information

Number of Shares Issued	928,462,002
Number of Shareholders	91,668
Stock Exchange Listings	Tokyo, Osaka, Nagoya
Securities Code	5016
Trading Unit	500 shares
Administrator of Shareholders' Register	The Chuo Mitsui Trust and Banking Co., Ltd.
Fiscal Year-End	March 31
General Shareholders' Meeting	June

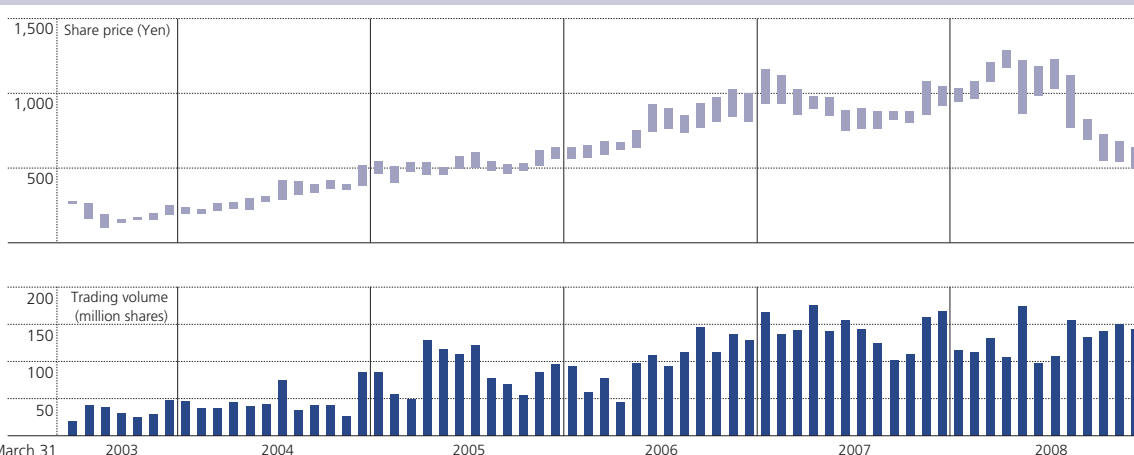
## Types of shareholders



## Major shareholders

Name of shareholder	Number of shares held (Thousands of shares)	Percentage of total issued shares (%)
The Master Trust Bank of Japan, Ltd. (held in trust account)	83,224	8.96
Japan Trustee Services Bank, Ltd. (held in trust account)	81,536	8.78
Mizuho Corporate Bank, Ltd.	22,172	2.39
Trust & Custody Services Bank, Ltd. (held in securities investment trust account)	16,612	1.79
State Street Bank and Trust Company 505103	16,596	1.79
Teikoku Oil Co., Ltd.	14,477	1.56
BNP Paribas Securities (Japan) Limited	14,199	1.53
Sompo Japan Insurance Inc.	13,982	1.51
State Street Bank and Trust Company	12,869	1.39
Investors Bank and Trust Company (West)—Pension Fund Clients	12,584	1.36

## Share price range and Trading volume



High (Yen)	277	519	642	1,024	1,162	1,286
Low (Yen)	99	193	400	565	753	498
At year-end (Yen)	242	494	589	993	1,017	528
Market capitalization* (Billions of yen)	205.3	419.1	499.7	842.5	944.2	490.2

\* Calculated with closing share price at the end of the term multiplied by the number of shares outstanding at the end of the term (including treasury stock)